

INSTALLATION INSTRUCTIONS

For Battery Powered Faucet



HD-501DC



HD-502DC



HD-507DC



HD-508DC



HD-509DC



HD-513DC



HD-514DC



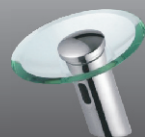
HD-515DC



HD-516DC



HD-517DC



HD-518DC

Apply to HD501DC/HD502DC/HD503DC/HD507DC/HD508D/HD-509DC
/HD-513DC/HD514DC/HD515DC/HD516DC/HD517DC/HD518DC

Packing list

- | | |
|---|-------------|
| 1. Installation instruction | one copy |
| 2. Faucet and sensor assembly (including trim plate with chrome and 800MM fiber optic cable) | |
| 3. Trim plate 162.5X65mm | one piece |
| 4. Finger nuts $\varnothing 10\text{mm}$ | two pieces |
| 5. Studs $\varnothing 10 \times 45\text{mm}$ | two pieces |
| 6. Washer gaskets | two pieces |
| 7. Base gasket | one piece |
| 8. Solenoid valve module assembly for battery powered model (including solenoid enclosure, solenoid body, and battery compartment). | |
| 9. Flex hose (Length: 600mm) | one piece |
| 10. Screws M3X8mm | six pieces |
| 11. Self-tapping screw M3X17mm | four pieces |
| 12. Plastic wall anchors $\varnothing 7 \times 27\text{mm}$ | four pieces |

Prior to installation

Before installing faucet, please open the box to check the packing list whether it includes all the items as the above. Please install them comply with our installation instruction, otherwise please contact dealer.

Specifications of Battery Powered Faucet

Diameter of inlet pipe:	DN15 (G1/2")
Diameter of outlet pipe:	DN15 (G1/2")
Water pressure:	0.05Mpa-0.6Mpa
Power and voltage:	DC6V
Power Consumption:	0.5MW
Ambient temperature:	0.1-45° C
Detection Zone:	Factory set 25cm for HD-507DC Factory set 30cm for HD-501DC, HD-502DC, HD-503DC, HD-508DC HD-509DC, HD-513DC, HD-514DC, HD-515DC HD-517DC, HD-516DC, HD-518DC (Based on standard white inductive board)
Protection degree:	IP56

TOOLS REQUIRED FOR INSTALLATION:

Head screwdriver

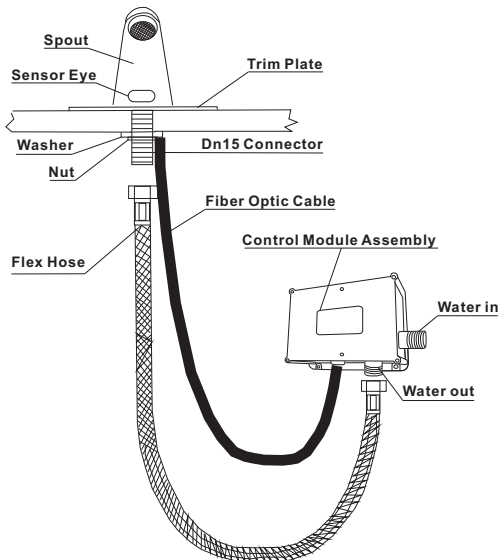
Wrench

Hammer (installing plastic wall anchors to wall)

Drill bit (installing plastic wall anchors to wall)

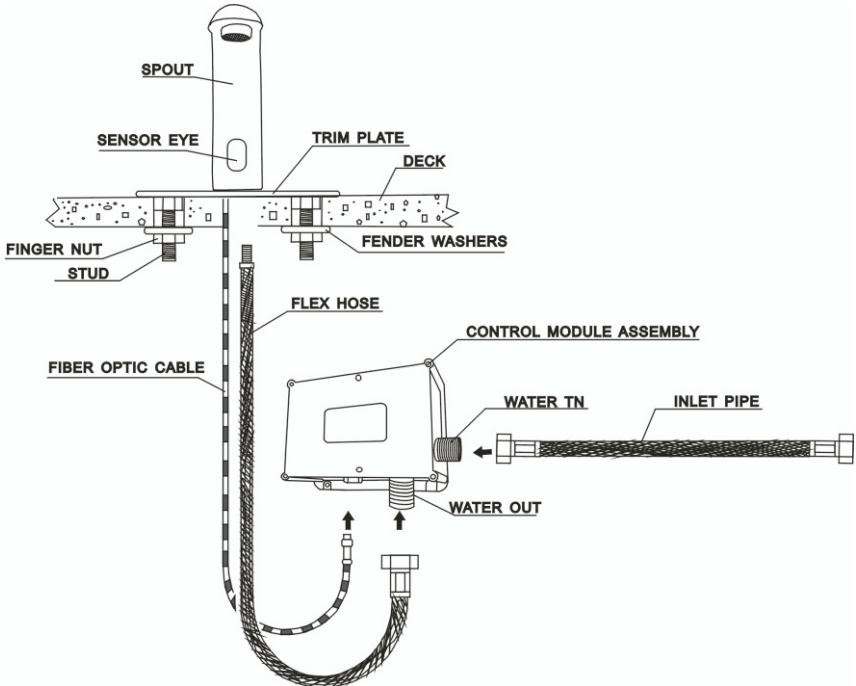
Please shut off the valve of inlet pipe before installation.

Note: We don't supply inlet pipe. Before installing Control module assembly, please check your inlet pipe whether it could be connected to the deck enough.



(Figure 1- installation for single-hole basin)

For three-holes basin:

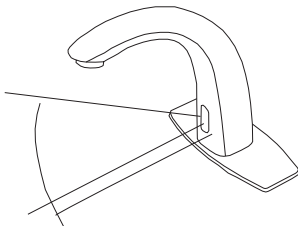


(Figure 2- Installation for three holes basin)

Step 1-Install faucet spout and trim plate

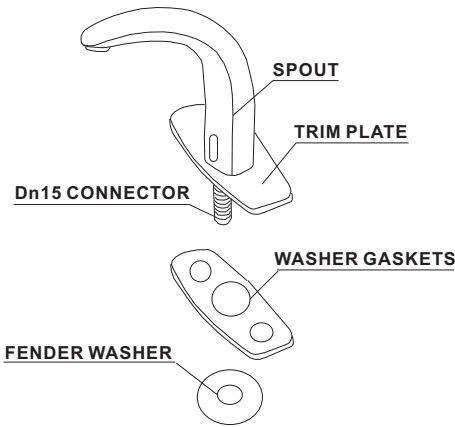
Note: The faucets have self-adjustable sensor eye, the step of adjustment sensor distance is only for reference of customer' s special requirements.

Before installing faucet spout and trim plate, please check whether detection zone factory set as “SPECIFICATIONS” meets your requirements; otherwise please adjust it complying with your

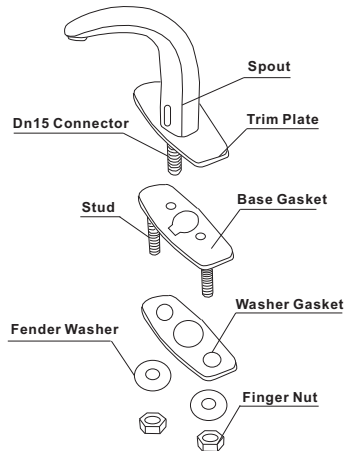


(Figure 3-Sensor Distance)

- 1.1 Loosen the 600MM flex hose slipknot from faucet assembly.
- 1.2 Loosen two nuts under the base gasket using head screwdriver, please.
- 1.3 **Loosen six nuts from the control module assembly, open and take out battery compartment, put 4AA alkaline batteries into battery compartment.**
- 1.4 **Connect fiber optic cable battery compartment. (Note: When connect optic cable to battery, without sensor object near the sensor location.)**
- 1.5 **Please use your hand to approach the “sensor eye” slowly from exceeding 30cm, When your hand in sensor location, you will hear beep from the battery compartment, meanwhile, the LED in the “sensor eye” flash red. A small nut is on the chipset located on the basis of “sensor eye”, turn around the small nut deasil or anti-clockwise to long or short of sensor distance.**
- 1.6 **When finished adjustment, please take off fiber optic cable from battery compartment, meanwhile take out the batteries.**
- 1.7 Put the “sensor eye” into faucet assembly, put the faucet assembly



(Figure 4- Install faucet spout & trim plate for single-hole basin)



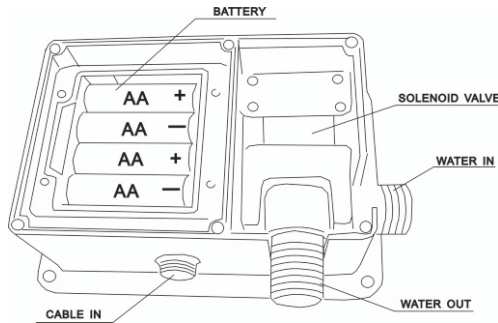
(Figure 5- Install faucet spout & trim plate for three-holes basin)

2. Connect flex hose to basis of spout (direction towards without nut).
3. Screw the two studs into trim plate with head screwdriver.

4. Put two (2) fender washers on the holes on top of deck which for inserting two studs.
5. Insert faucet assembly and fiber optic cable together with flex hose and studs through holes in deck.
6. Using two (2) fender washers into the two studs from below deck, and then put two (2) finger nuts supplied into two studs, screw them into studs from below deck to secure trim plate on deck.

Step2- Install Control module assembly

Before install Control module assembly, please check the place of deck and installation place of Control module assembly. If confirmed, please put the Control module assembly onto the wall first, and use drill bit to anchor the four holes.



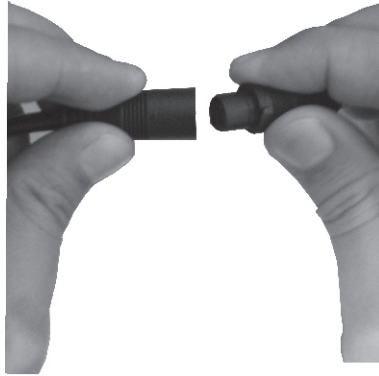
(Figure 5- Control module assembly)

1. Using 6mm drill bit follow the four anchors to drill four holes into wall.
2. Using hammer knock the four plastic wall anchors supplied into wall.
3. Installing Control module assembly to wall, knock four self - tapping screws into four plastic wall anchors. Then the Control module assembly is installed onto wall.

Step3-Connect flex hose to solenoid valve

Use wrench to connect the free end of the flex hose to the outlet side of the solenoid valve.

Step4-Connect fiber optic cable



(Figure 5 Connect Fiber Optic Cable)

- 1.Connect the free end of fiber optic cable to the Control module assembly.
- 2.Thread the connector cap with nut onto the Control module assembly to secure the connection.

Note: Please keep the sensor plastic cable clean and dry when install it, in order to keep the machine workable.

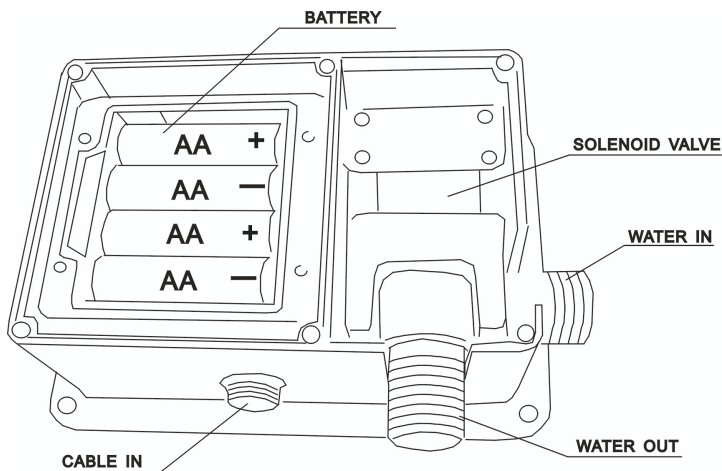
Note: When installation is finished, please use a small piece of soft and dry cloth to wipe away the “sensor eye” slightly.

Step5-Battery installation

Note: DO NOT INSTALL THE BATTERIES UNTIL THE FAUCET IS COMPLETELY INSTALLED.

If the batteries are installed before the fiber optic cable has been connected to the Control module assembly, the faucet will not properly set the sensing range for the sink on which it has been installed.

Loosen the cap of control module assembly with head screwdriver, and loosen the cap of battery compartment. To ensure proper operation, inset four (4) new C-size alkaline batteries. Check that the orientation of each battery matches the positive (+) and negative (-) symbols shown in the bottom of the battery compartment. Make sure that spout is properly centered and that no objects are in the sink. Close the cap of battery compartment and cap of the control module assembly follow the above steps.



(Figure 6 Battery Installation)

Step6-Connect inlet pipe (not supplied)

Please connect inlet pipe (not supplied) to control module assembly.

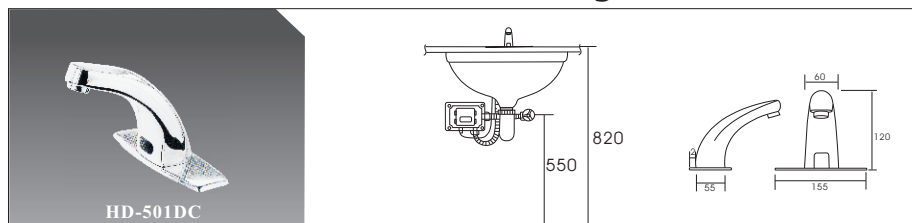
Note: Please use the proper inlet pipe into diameter of inlet on solenoid valve.

Very Important: Please turn off the inlet pipe valve to install the inlet pipe.

Step7-Turn on the inlet pipe valve

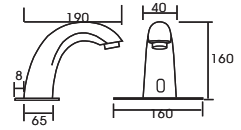
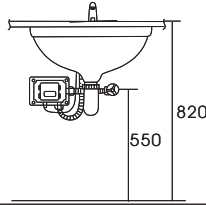
Please turn on the inlet pipe valve, to check whether water flowing and sensor distance meets your requirements. If not, Please follow the above ways to adjust the sensor distance again.

Dimension & Instruction Diagram

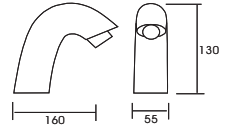
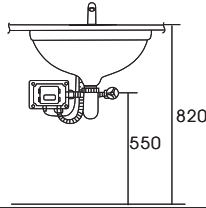




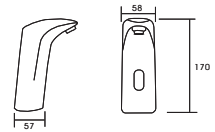
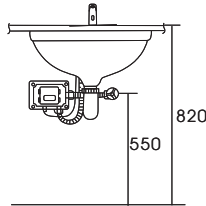
HD-502DC



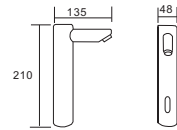
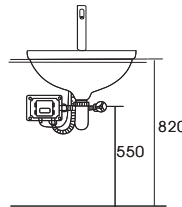
HD-507DC



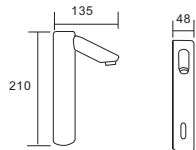
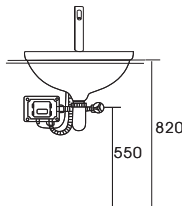
HD-508DC

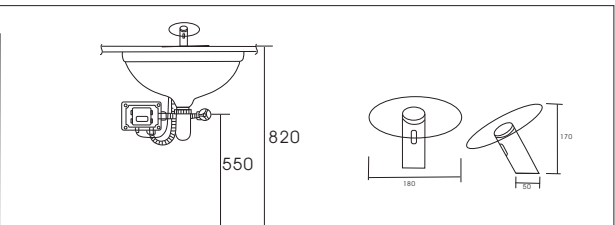
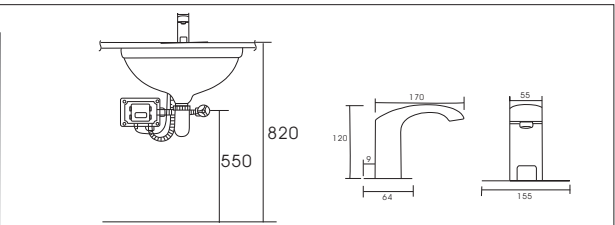
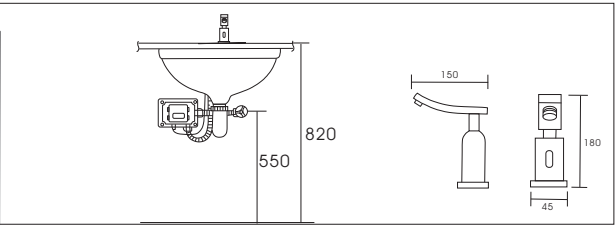
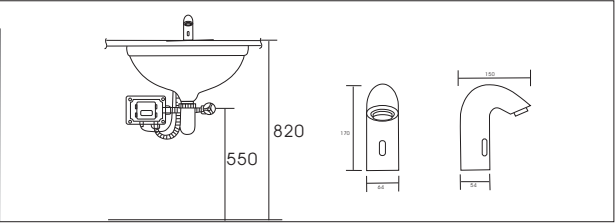
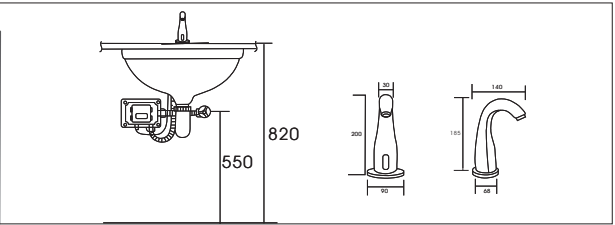


HD-509DC



HD-513DC





BATTERY REPLACEMENT PROCEDURE

Battery powered faucet with 4AA alkaline batteries can be used for 2 years at 200 cycles a day. When the batteries are low and need to be replaced, the faucet will signal you, when your hand approach the sensor location, the LED will flash red three times quickly without water out; when without object to approach the sensor location, the LED will red one time per four second. At this point we recommend battery replacement.

To replace batteries:

Note: Water supply to the faucet does not need to be turned off when replacing batteries.

Loosen the cap of control module assembly with head screwdriver, and loosen the cap of battery compartment. To ensure proper operation, inset four (4) new C-size alkaline batteries. Check that the orientation of each battery matches the positive (+) and negative (-) symbols shown in the bottom of the battery compartment. Make sure that spout is properly centered and that no objects are in the sink. Close the cap of battery compartment and cap of the control module assembly follow the above steps.

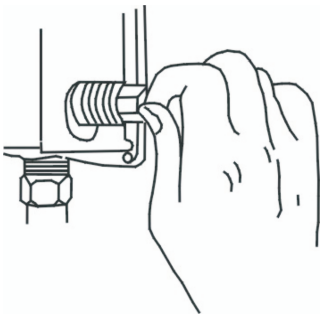
Upon installation of the batteries, faucet will begin a new self calibration procedure.

SOLENOID SCREEN FILTER CLEANING PROCEDURE

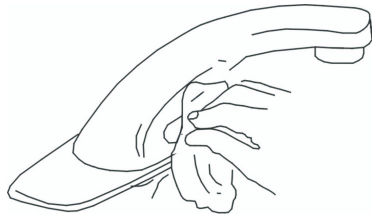
Before cleaning the screen filter, turn off the water supply at the supply stop(s). Turn off the inlet pipe. Activate the faucet to relieve any pressure in the system.

Clean the screen filter using fresh tap water. If necessary, use a small brush to clean. Use caution while cleaning to prevent damage to the solenoid screen filter.

Connect the inlet pipe; turn on the water supply at the supply stop(s). Activate the faucet to purge any air from the system lines. Check for leaks and repair as necessary.



(Figure 7 Solenoid Screen Filter Cleaning)

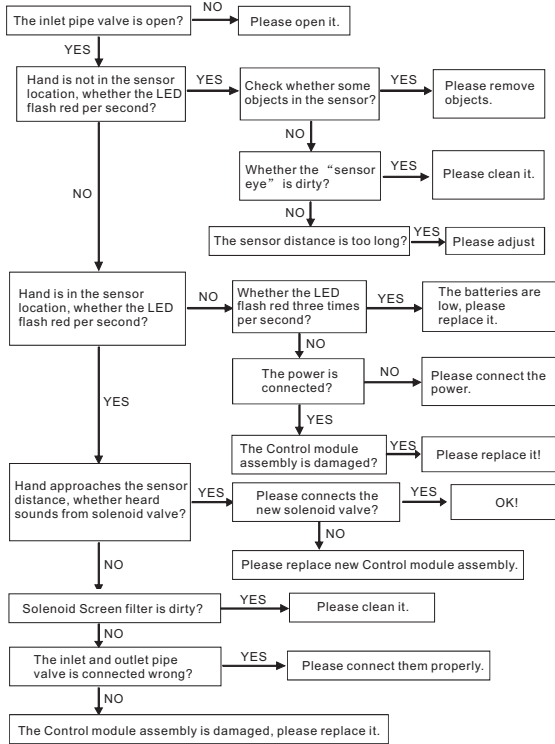


SENSOR EYE CLEARING

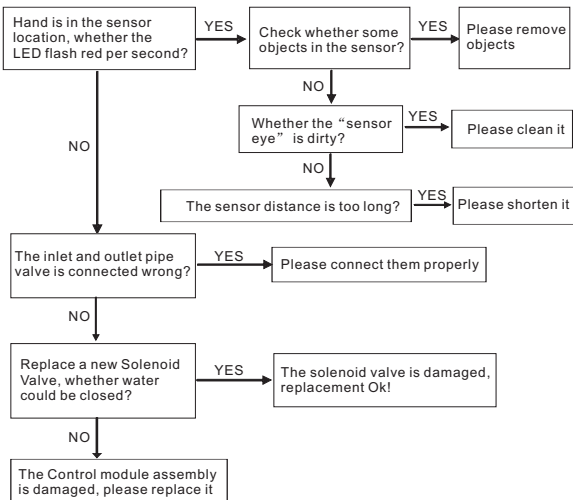
(Figure 8 Sensor Eye Clearing)

TROUBLESHOOTING GUIDE

PROBLEM: Sensor is activated but faucet does not flow water.



PROBLEM: Faucet does not stop delivering water?



Distributor: